

ivtvision™

Cross Platform IP Video Surveillance Software and Systems



Flexible Scalability: Single Camera to Enterprise

INAXSYS™ • www.inaxsys.com • 1.888.648.6648

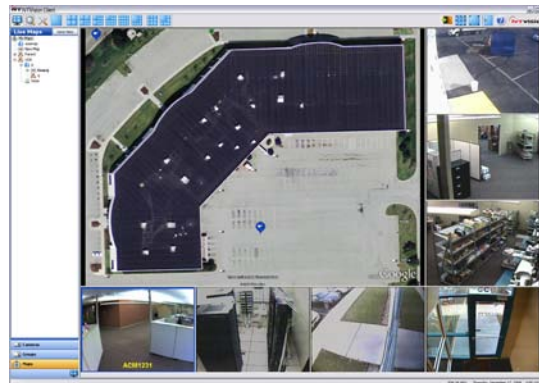
- Easy to Install and Operate
- Fully Functional Windows, Linux & Mac Clients
- Server Software Runs on Windows and Linux
- Enhanced Web Server (Live and Recorded Video)
- Digital PTZ (Live & Recorded Video)
- Optical PTZ Camera Control (Analog and IP)
- Graphic Search Display
- Simple and Flexible IP Camera Licensing
- POS/ATM Text Insertion Search
- Event Search & Event Monitoring
- Pre/Post-alarm Recording
- Smart Search
- Virtual Matrix
- Multi-Monitor (video wall)
- Multi-Camera Playback & Export
- IVTRecall Single Button Export
- IVT Replay Quick Convenient Playback
- Analog & IP Cameras on One Interface
- Supports Megapixel and H.264 Cameras
- Megapixel Camera Cropping
- Covert Cameras
- Sensitivity Settings
- Selectable Frame Rate
- Privacy Block
- Simple Mapping
- Enterprise Multi-Level Mapping
- LDAP / Active Directory
- Enterprise User Setup



NEW
ONVIF
Support



IVTVision client for Mac

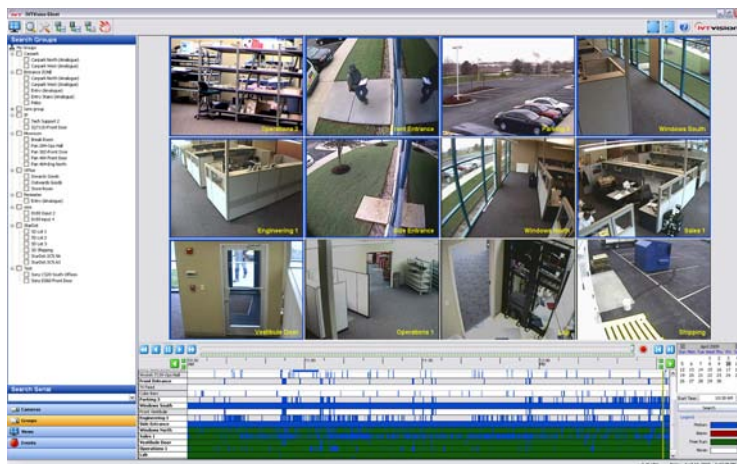


Mapping feature on IVTVision client

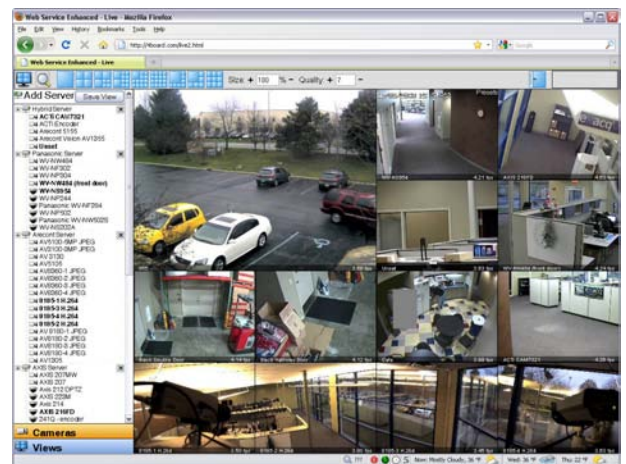


Powerful Searching

Search for and view video from multiple cameras across multiple IVTVision servers simultaneously. Scrub bar easily moves back and forth through recorded video. Use Smart Search to quickly find specific video. Export the entire clip just as it appears as a self executable file that will open on any PC without the need to download software.



Multi-camera recorded video on client software (Windows/Linux/Mac).



Live view on new Enhanced Web Service (any browser)

Browser Compatibility



Mobile Compatibility (browser)



Client Compatibility



Build your IVTVision Video Management System using any combination of the following servers:

IVTVision Hybrid Servers

factory installed, windows & linux, analog & IP cameras



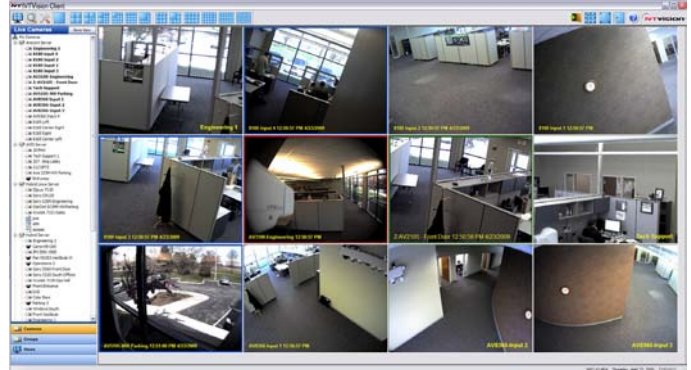
IVTVision IP Camera Servers

factory installed, windows & linux, IP cameras



Commercial Off-The-Shelf Servers

COTS solution, windows & linux, IP cameras



Administrate all of your servers with the free included IVTVision Client software running on a Windows, Linux or Macintosh computer.



2U Rackmount
IVTVision Hybrid NVR Server



4U Rackmount
IVTVision Hybrid or IP Server
Up to 16TB

HARDWARE FEATURES

- Hybrid Systems (analog & IP Cameras on a Single Server)
- Flexible Scalability: Single Camera to Enterprise
- Up to 16TB Storage Capacity Per Server
- Up to 128 Channels Per Server (64 Analog/64 IP)
- Factory Installed IVTVision Software and OS
- Three-Year Warranty on All IVTVision Servers
- One-Year Free Software Upgrades
- Simple & Flexible IP Camera Licensing--Not Tied to IP Camera MAC Address
- Easy to Use Software With Powerful Features
- Phone and Online Technical Support
- RAID-5 Available on 4U Servers
- iSCSI Storage Integration

LINUX IP & HYBRID RECORDING APPLIANCES



- Low Cost Servers for Smaller Applications
- HRA - 8/16CH Analog + Up to 24 x IP Cameras
- IPRA - Up to 24 x IP Cameras
- Up to 4TB of Storage with Removable Drives
- Web Server Included + Mobile Apps
- Fully Compatible With All IVTVision Systems

NEW

Server and Software Features



	IVTVision Hybrid NVR Servers			IVTVision IP Camera Servers		
	Mini Desktop 4 or 16 analog Up to 64 IP (includes 8)	2U Rackmount 16 or 32 analog Up to 64 IP (includes 8)	4U Rackmount 16, 32, and 48 analog Up to 64 IP (includes 8)	Mini Desktop Up to 64 IP Cameras	2U Rackmount Up to 64 IP Cameras	4U Rackmount Up to 64 IP Cameras
Max. Storage Capacity	4 TB	6 TB	16 TB	4 TB	6 TB	16 TB
RAID-5 Option			✓			✓
Removeable Hard Drives	✓	✓	✓	✓	✓	✓
IP Inputs	8 included (Up to 64)	8 included (Up to 64)	8 included (Up to 64)	Up to 64 or more	Up to 64 or more	Up to 64 or more
Analog Inputs	4 / 16	16 / 32	16 / 32 / 48 / 64			
Looping outputs	0	16 / 0	16 / 0 / 0			
MUX Analog Output	✓	✓	✓			
Max. Analog IPS (NTSC)	120 / 480	120 / 240 / 480 / 960	480 / 960 / 1440 / 1920			
Max. Analog IPS (PAL)	100 / 400	100 / 200 / 400 / 800	400 / 800 / 1200 / 1600			
NIC Configuration	1 Gb (2nd is Optional)	1 Gb (2nd is Optional)	1 Gb (2nd is Optional)	1 Gb (2nd is Optional)	1 Gb (2nd is Optional)	1 Gb (2nd is Optional)
OS on Solid State Drive	✓	✓	✓	✓	✓	✓
Redundant Power Supply			Optional			Optional
System Watchdog	✓	✓	✓			
Audio Inputs	1 (+IP Cameras)	4 (+IP Cameras)	4 / 8 / 1 / 1 (+IP Cameras)	Camera Defined	Camera Defined	Camera Defined
Alarm Inputs	8	16	Up to 16			
Alarm Outputs	1	16	Up to 32			

SOFTWARE FEATURES	Prime Server Software	Professional Server Software	Enterprise Server Software
Max. Cameras per Server (hardware dependent)	16 Analog 16 IP	64 Analog 96 IP	64 Analog 96 IP
Server OS Compatibility	Windows/Linux	Windows/Linux	Windows/Linux
Free Client Software	Windows/Linux/Mac	Windows/Linux/Mac	Windows/Linux/Mac
Web Server (Live & Playback)	✓	✓	✓
Browser Compatibility	IE, Chrome, Safari, Firefox, Opera	IE, Chrome, Safari, Firefox, Opera	IE, Chrome, Safari, Firefox, Opera
Max. Server Connections per Client	1	512 (thick client) 16 (web client)	512 (thick client) 16 (web client)
Multi-camera Playback	✓	✓	✓
Analog PTZ Control & Presets	✓	✓	✓
Digital PTZ Control & Presets	✓	(Live and Recorded Video)	(Live and Recorded Video)
Event Notification		SMS (text messages & e-mail)	SMS (text messages & e-mail)
Video Export	✓	✓	✓
Smultaneous Video Export	1 Channel	16 Channel	16 Channel
Video Loss Notification		✓	✓
Event Linking	Discrete Inputs Only	✓	✓
Graphic Search Display	✓	✓	✓
POS/ATM Text Insertion Search	✓	✓	✓
Event Searching	✓	✓	✓
Multi-Monitor & Video Wall	✓	✓	✓
IVT Recall One Button Export		✓	✓
IVT Instant Replay	✓	✓	✓
Mapping		✓	Multi-Level
LDAP / Active Directory			✓
Enterprise User Setup			✓

IP Camera Integration

Access Control Integration