



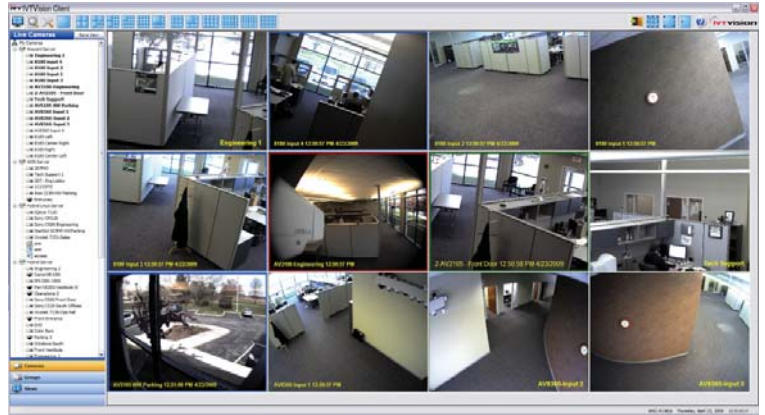
Hybrid NVR Servers - 2U Rackmount

IP and Analog Cameras

16 or 32 Analog Inputs + 8 IP Inputs (Expandable to 64)



The ITVision® Hybrid NVR (Network Video Recorder) Server provides seamless integration and recording of both analog and IP video surveillance cameras. The powerful, yet easy to operate client user interface installs on any standard computer running Windows, Linux or Mac OS X and can connect to an unlimited number of ITVision Hybrid and IP camera servers.



Features ITVision 2U Rackmount Servers & VMS Software

Stand-Alone or Enterprise

- Up to 96 cameras (32 analog + 64 network) per server. Included 8 IP licenses
- Simple and cost-effective to add additional IP camera licenses
- Common client simultaneously connects to unlimited ITVision servers to create scalable network

Powerful Integration

- Supports latest IP camera technology including multi-megapixel cameras, H.264, analytics
- Integration with access control systems, iSCSI storage and loss prevention systems

True Hybrid

- Seamless integration of analog and IP cameras on a single server
- Supports analog and IP PTZ cameras
- Digital PTZ functionality on all cameras (analog and IP) in live and recorded mode

Intuitive ITVision Software

- Requires little to no training
- Multi-monitor client display. Drag and drop cameras between monitors
- Graphical search display for all cameras and recorded audio
- Multi-camera playback and export
- Powerful video and audio export features Integration

Mobile Access

- Access video with web browsers and mobile devices with internet access

Cross Platform

- Server software runs on Windows or Linux
- Client software freely available for Windows, Linux and Macintosh



IP Camera Integration

Access Control Integration



Server Specifications

RECORDING RESOLUTION CIF: (ANALOG):	352 x 240 NTSC / 352 x 288 PAL 2CIF: 720 x 240 NTSC / 720 x 288 PAL 4CIF (D1) 720 x 480 NTSC / 720 x 576 PAL
RECORDING RESOLUTION (IP):	Up to 8 megapixel (camera dependent)
FRAME RATE IPS (ANALOG):	NTSC: 120, 240, 480, 960 PAL: 100, 200, 400, 800
COMPRESSION (ANALOG):	MPEG-4 ASP or MJPEG
COMPRESSION (IP):	H.264, MPEG-4, MJPEG
ALARM INPUTS:	16 TTL inputs - screw terminal
ALARM OUTPUTS:	15 TTL outputs and 1 relay output - screw terminal
VIDEO INPUTS (ANALOG):	16 or 32 BNC
ANALOG PTZ PROTOCOLS:	Pelco D/P, GE-Impac, GE-ASCII, Bosch, Panasonic American Dynamics (RS-422)
VIDEO INPUTS (IP):	Up to 64 per server
VIDEO OUTPUTS (ANALOG):	2 or 4 BNC
LOOPING OUTPUTS:	16 or 0 BNC
AUDIO INPUTS:	4 audio input - screw terminal + IP camera audio
SERIAL CONNECTIONS:	RS-485 PTZ port
PROCESSOR:	Intel® Core™ i3-530
RAM:	4GB DDR2 800 SDRAM
NIC:	1Gbit 1000Base T RJ-45
USB2 PORTS:	8 (2 front, 6 rear)
HARD DRIVE STORAGE:	Enterprise Class, up to 6TB
VGA OUTPUT:	1 VGA (DB15) or DVI-D
KEYBOARD & MOUSE:	Yes
DVD/CD RW:	Yes (front panel access)
WATCHDOG TIMER:	Yes
OPERATING SYSTEM:	Windows XP Pro, Windows Server 2003 (optional) or Linux (optional)
REGULATORY:	CE (Class A), FCC (Class A)
WARRANTY:	3 years, parts and labor
DIMENSIONS (LxWxH):	21.25 x 19.0 x 3.5 (2U) in. / 53.975 x 48.26 x 8.89 cm
WEIGHT:	28.7 - 32.1 lbs. / 13 - 14.6 kg
OPERATING TEMPERATURE:	40 - 90° F / 4.5 - 35° C
RELATIVE HUMIDITY:	5-95% RH (non-condensing)
INPUT VOLTAGE:	120 VAC
POWER CONSUMPTION:	< 250 watts (150 watts typical)

Client Workstation - Min. Requirements

(Full remote operation from most computers)

OS:	Windows, Linux, Mac OS
PROCESSOR:	2 Ghz Celeron (min.)
MEMORY:	512 MB RAM
VGA:	Standard high performance

Web Browser Access

(Access servers from online browser)

COMPATIBILITY:	Internet Explorer Firefox Apple Safari Opera Google Chrome
----------------	--

Mobile Device Access

(Access video from mobile devices with Internet)

COMPATIBILITY:	iPhone and iPod Touch BlackBerry Windows Mobile OS Most internet ready devices
----------------	---



Browser Compatibility



Mobile Compatibility (browser)



Client Compatibility

