

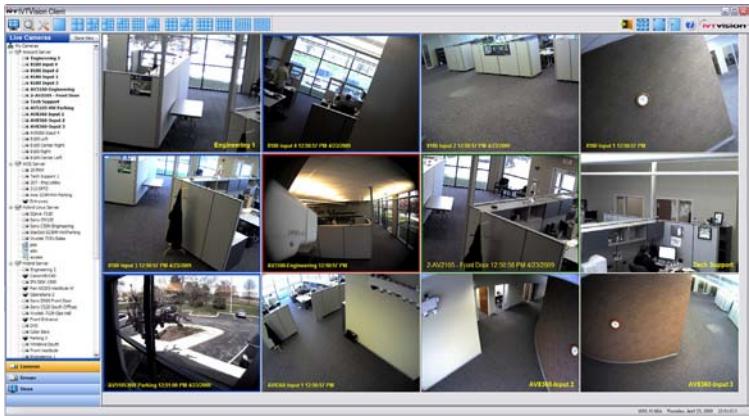


NVR Servers - 2U Rackmount

Cross Platform IP Video Surveillance Up to 64 IP Cameras per Server



The IVTVision® IP Camera NVR (Network Video Recorder) provides complete video management utilizing today's latest IP video surveillance cameras on an enterprise-class chassis. The system comes pre-configured with the IVTVision Server and client software. The powerful, yet easy-to-operate client user interface installs on any standard computer running Windows, Linux or Mac OS X and connects to multiple IVTVision servers creating a virtually unlimited amount of cameras and protection. Video from all IVTVision systems can also be accessed with web browsers and mobile devices with access to the internet. Each 2U Rackmount IP Server can be easily expanded from 1 to up to 64 IP cameras.



Features IVTVision 2U Rackmount NVR Servers & VMS Software

Stand-Alone or Enterprise

- Each server expandable from 1 to 64 IP cameras
- Simple and cost-effective to add additional IP camera licenses
- Common client simultaneously connects to unlimited IVTVision servers to create scalable network

Powerful Integration

- Supports latest IP camera technology including multi-megapixel cameras, H.264, analytics
- Integration with access control systems, iSCSI storage and loss prevention systems

Intuitive IVTVision Software

- Requires little to no training
- Multi-monitor client display. Drag and drop cameras between monitors
- Graphical search display for all cameras and recorded audio
- Multi-camera playback and export
- Powerful video and audio export features Integration

Mobile Access

- Access video with web browsers and mobile devices with internet access

Cross Platform

- Server software runs on Windows or Linux
- Client software freely available for Windows, Linux and Macintosh



IP Camera Integration

Access Control Integration



Server Specifications

IP CAMERA INPUTS:	Up to 64 per server
RECORDING RESOLUTION:	Up to 10 megapixel (camera dependent)
FRAME RATE:	Camera dependent
COMPRESSION:	H.264, MPEG-4, MJPEG (camera dependent)
SERIAL CONNECTIONS:	1 serial port
PROCESSOR:	Intel® Core™i3-530
RAM:	4GB DDR2 800 SDRAM
NIC:	1Gbit 1000Base T RJ-45
USB2 PORTS:	8 (2 front, 6 rear)
HARD DRIVE STORAGE:	Enterprise Class, Removable, up to 6TB
OS DRIVE:	Internal Flash/Solid State Drive
VGA OUTPUT:	1 VGA (DB15), 1 DVI-D
KEYBOARD & MOUSE:	Yes
WATCHDOG TIMER:	Yes
OPERATING SYSTEM:	Windows XP Pro, Windows Server 2003 (optional) or Linux (optional)
REGULATORY:	CE (Class A), FCC (Class A)
WARRANTY:	3 years, parts and labor
DIMENSIONS (LxWxH):	21.25 x 19.0 x 3.5 (2U) in. / 53.975 x 48.26 x 8.89 cm
WEIGHT:	28.7 - 32.1 lbs. / 13 - 14.6 kg
OPERATING TEMPERATURE:	40 - 90° F / 4.5 - 35° C
RELATIVE HUMIDITY:	5-95% RH (non-condensing)
INPUT VOLTAGE:	120 VAC
POWER CONSUMPTION:	< 250 watts (150 watts typical)

Client Workstation - Min. Requirements

(Full remote operation from most computers)

OS:	Windows, Linux, Mac OS
PROCESSOR:	2 Ghz Celeron (min.)
MEMORY:	512 MB RAM
VGA:	Standard high performance

Web Browser Access

(Access servers from online browser)

COMPATIBILITY:	Internet Explorer
	Firefox
	Apple Safari
	Opera
	Google Chrome

Mobile Device Access

(Access video from mobile devices with Internet)

COMPATIBILITY:	iPhone and iPod Touch
	Android
	BlackBerry
	Windows Mobile OS
	Most internet ready devices



Browser Compatibility



Mobile Compatibility (browser)



Client Compatibility

