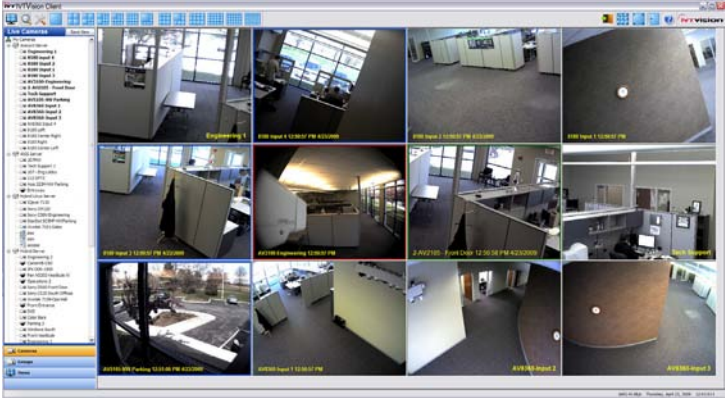




NVR Servers - Desktop

Cross Platform IP Video Surveillance Up to 64 IP Cameras per Server

The IVTVision® IP Camera NVR (Network Video Recorder) Server is a system that provides recording of today's latest IP video surveillance cameras utilizing a low-cost, space-saving desktop chassis. The powerful, yet easy-to-operate client interface installs on any standard computer running Windows, Linux or Mac OS X and connects to multiple IVTVision servers creating a virtually unlimited amount of cameras and protection. Video from all IVTVision systems can also be accessed with web browsers and mobile devices. Each Desktop IP Camera NVR server can be easily expanded from 1 to up to 64 IP cameras.



Features IVTVision Desktop NVR Servers & VMS Software

Stand-Alone or Enterprise

- Each server expandable from 1 to 64 IP cameras
- Simple and cost-effective to add additional IP camera licenses
- Common client simultaneously connects to unlimited IVTVision servers to create scalable network

Powerful Integration

- Supports latest IP camera technology including multi-megapixel cameras, H.264, analytics
- Integration with access control systems, iSCSI storage and loss prevention systems

Intuitive IVTVision Software

- Requires little to no training
- Multi-monitor client display. Drag and drop cameras between monitors
- Graphical search display for all cameras and recorded audio
- Multi-camera playback and export
- Digital PTZ functionality on all cameras in live and recorded mode
- Powerful video and audio export features including multi-camera playback and export

Mobile Access

- Access video with web browsers and mobile devices with internet access

Cross Platform

- Server software runs on Windows or Linux
- Client software freely available for Windows, Linux and Macintosh



IP Camera Integration

Access Control Integration

Server Specifications

IP CAMERA INPUTS:	Up to 64 per server
RECORDING RESOLUTION:	Up to 8 megapixel (camera dependent)
FRAME RATE:	Camera dependent
COMPRESSION:	H.264, MPEG-4, MJPEG (camera dependent)
SERIAL CONNECTIONS:	1 serial port
PROCESSOR:	Intel® Core™ i3-530
RAM:	4GB DDR2 800 SDRAM
NIC:	1Gbit 1000Base T RJ-45
USB2 PORTS:	5 (2 front, 3 rear)
HARD DRIVE STORAGE:	Enterprise Class, Removable, up to 4TB
OS DRIVE:	Internal Flash/Solid State Drive
VGA OUTPUT:	Dual VGA outputs: 1 DVI-D and 1 VGA (DB15)
KEYBOARD & MOUSE:	Yes
WATCHDOG TIMER:	Yes
OPERATING SYSTEM:	Windows XP Pro, Windows Server 2003 (optional) or Linux (optional)
REGULATORY:	CE (Class A), FCC (Class A)
WARRANTY:	3 years, parts and labor
DIMENSIONS (LxWxH):	7.9" (H) x 10.6" (W) x 13.2" (D) 20cm (H) x 26.9cm (W) x 33.5cm (D)
WEIGHT:	20.9 - 22 lbs. / 9.5 - 10 kg
OPERATING TEMPERATURE:	40 - 95° F / 4.5 - 35° C
RELATIVE HUMIDITY:	5-95% RH (non-condensing)
INPUT VOLTAGE:	120 VAC
POWER CONSUMPTION:	< 250 watts (150 watts typical)



Client Workstation - Min. Requirements

(Full remote operation from most computers)

OS:	Windows, Linux, Mac OS
PROCESSOR:	2 Ghz Celeron (min.)
MEMORY:	512 MB RAM
VGA:	Standard high performance

Web Browser Access

(Access servers from online browser)

COMPATIBILITY:	Internet Explorer Firefox Apple Safari Opera Google Chrome
----------------	--

Mobile Device Access

(Access video from mobile devices with Internet)

COMPATIBILITY:	Apple iPhone, iPad, iPod Touch Android, BlackBerry Windows Mobile OS Most internet ready devices
----------------	---



Browser Compatibility



Mobile Compatibility (browser)



Client Compatibility

