

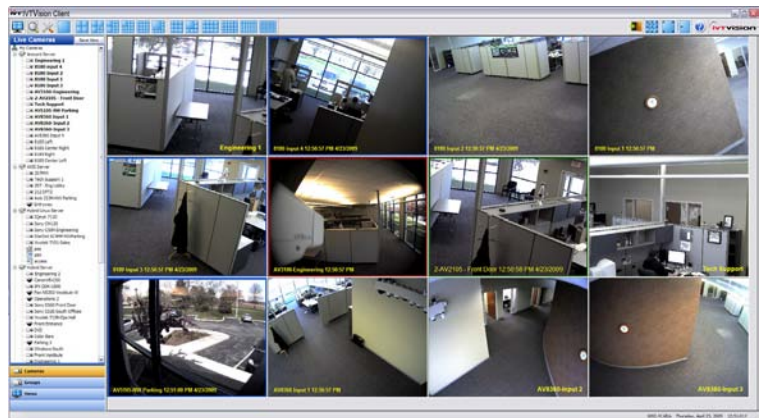


Hybrid Recording Appliance - HRA

IP and Analog Cameras
8 or 16 Analog Inputs + up to 24 IP Inputs



The IVTVision HRA is a low cost, highly energy efficient, hybrid network video surveillance appliance that provides a new level of reliability, performance and energy efficiency. High reliability is achieved through the use of Linux OS on a solid-state drive, ensuring the unit is always accessible. Full D1 30fps on 8 or 16 analog cameras. Extremely low power consumption for energy efficiency and cool operation.



Features IVTVision Hybrid Recording Appliance & IVTVision VMS Software



- **High Reliability** – Fully functional Linux OS operating on a solid-state drive ensures unit keeps functioning and alerts you of hard drive failures.
- **High Frame Rate** – 240 (8CH) 480 (16CH) ips at D1 resolution
- **Efficient File Size** – Uses leading-edge H.264 video compression on all analog channels.
- **True Hybrid** – Any combination of analog and IP cameras from all of the leading camera vendors. Standard resolution or megapixel, even the latest H.264 compression IP cameras. Use existing analog cameras today, add up to 24 IP cameras.
- **Compact Chassis** – 1.5U Rackmount professional chassis can be used in tight spaces, under the counter, equipment cabinets, or in professional IT racks. Stack units for high-density camera counts.
- **High Energy Efficiency** – Reduced energy footprint and lower lifetime operating cost through energy efficient, cool operation design. Thermally-optimized chassis ensures cool operation and high reliability.
- **Low Cost** – One of the least expensive, true hybrid systems to purchase and operate on the market today.
- **High Performance** – Optimized application for the latest Intel® Atom™ microprocessor, providing high performance with very low power consumption and heat generation.
- **Intuitive IVTVision Software** - all of the features of IVTVision are available on this unit. Use as an inexpensive stand-alone system, or as part of a large enterprise system.
- **Cross-Platform Client** – View, search and administer with the IVTVision client software on Windows, Linux and Macintosh computers.
- **Powerful Remote Access** – Access video with web browsers and mobile devices with internet access; Apple® iPhone® & iPad™ Android apps available.



IP Camera Integration



Access Control Integration



Hybrid Recording Appliance Specifications

RECORDING RESOLUTION - ANALOG: CIF: 352x240 NTSC / 352x288 PAL
2CIF: 720x240 NTSC / 720x288 PAL
4CIF (D1): 720x480 NTSC / 720x576 PAL

RECORDING RESOLUTION - IP: Up to 10 Megapixel; IP camera dependent

FRAME RATE - ANALOG: NTSC: 240 IPS (30 ips/8 analog cameras)
480 IPS (30 ips/16 analog cameras)
PAL: 200 IPS (25 ips/8 analog cameras)
400 IPS (25 ips/16 analog cameras)
IP camera dependent

FRAME RATE - IP: IP camera dependent

COMPRESSION - ANALOG: H.264 or MJPEG hardware compression

COMPRESSION - IP CAMERAS: H.264, MPEG-4, MJPEG (camera dependent)

ALARM INPUTS: 4 TTL inputs

ALARM OUTPUTS: 2 TTL outputs and 1 relay output

VIDEO INPUTS - ANALOG: 8/16 BNC

VIDEO INPUTS - IP: up to 16 PRIME or 24 PROFESSIONAL IP camera inputs max. (optional)

VIDEO OUTPUTS - ANALOG: 1 BNC, 8 Looping Outputs on 8CH models

ANALOG PTZ PROTOCOLS: AD-RS422, Bosch, GE-ASCII, GE-Impac, Panasonic, Pelco D/P

AUDIO INPUTS: 4 + IP camera audio

SERIAL CONNECTIONS: RS-485 PTZ port, RS-232 port

NIC: 1 Gbit 1000Base T RJ-45

USB2 PORTS: 6 (2 front, 4 rear)

HARD DRIVE STORAGE: Enterprise class removable, up to 4TB

VGA OUTPUT: 1 VGA (DB15)

KEYBOARD & MOUSE: Included

WATCHDOG TIMER: Included

OPERATING SYSTEM: Linux embedded on flash drive

COMPATIBLE CLIENT OPERATING SYSTEMS: Windows 7, Windows Vista, Windows XP, Windows Server 2003/2008, 32-bit or 64-bit Windows OS, Linux (Ubuntu), Mac OS X

WEB BROWSER SUPPORT: IVTVision Web server included, allows multi-camera view and recorded video playback via any web browser

MOBILE SUPPORT: View and playback from any mobile device browser, Apple iPhone & iPad, Android aps available

REGULATORY: CE (Class A), FCC (Class A)

WARRANTY: 3 Years, parts & labor

DIMENSIONS without rack kit (LxWxH): 14.5 x 16.5 x 2.5 (1.5U) inches
36.8 x 41.9 x 6.3 cm

WEIGHT: 12 lbs. / 5.5 kg

OPERATING TEMPERATURE: 40 - 95° F / 4.5 - 35° C

RELATIVE HUMIDITY: 5-95% RH (non-condensing)

INPUT VOLTAGE: 120/240 VAC auto-sensing

POWER CONSUMPTION: 35W maximum

Client Workstation - Min. Requirements

(Full remote operation from most computers)

OS: Windows, Linux, Mac OS
PROCESSOR: 2 Ghz Celeron (min.)
MEMORY: 512 MB RAM
VGA: Standard high performance

Web Browser Access

(Access servers from online browser)

COMPATIBILITY: Internet Explorer
Firefox
Apple Safari
Opera
Google Chrome

Mobile Device Access

(Access video from mobile devices with Internet)

COMPATIBILITY: iPhone, iPad and iPod Touch
Android
BlackBerry
Windows Mobile OS
Most internet ready devices

Model#	Analog Inputs	IPS	Analog Outputs	IP Licenses	HD Capacity
HRA-080024-0500	8	240	1 mux / 1 spot	up to 24	500GB
HRA-080024-1000	8	240	1 mux / 1 spot	up to 24	1TB
HRA-080024-2000	8	240	1 mux / 1 spot	up to 24	2TB
HRA-080024-3000	8	240	1 mux / 1 spot	up to 24	3TB
HRA-080024-4000	8	240	1 mux / 1 spot	up to 24	4TB
HRA-160048-0500	16	480	1 mux / 1 spot	up to 24	500GB
HRA-160048-1000	16	480	1 mux / 1 spot	up to 24	1TB
HRA-160048-2000	16	480	1 mux / 1 spot	up to 24	2TB
HRA-160048-3000	16	480	1 mux / 1 spot	up to 24	3TB
HRA-160048-4000	16	480	1 mux / 1 spot	up to 24	4TB
Part#	Description				
IVT-PRIME-01	IVTVision PRIME Single IP Camera License				
IVTIP-01-01	IVTVision PROFESSIONAL Single IP Camera License				
PRIME-UPG-PRO	PRIME Upgrade to Professional license				
SSA-PRIME-01	IVTVision PRIME 1-Year/License Software Update SSA				
SSA-IVTIP-01	IVTVision PRO 1-Year/License Software Update SSA				



Browser Compatibility



Mobile Compatibility (browser)



Client Compatibility

