

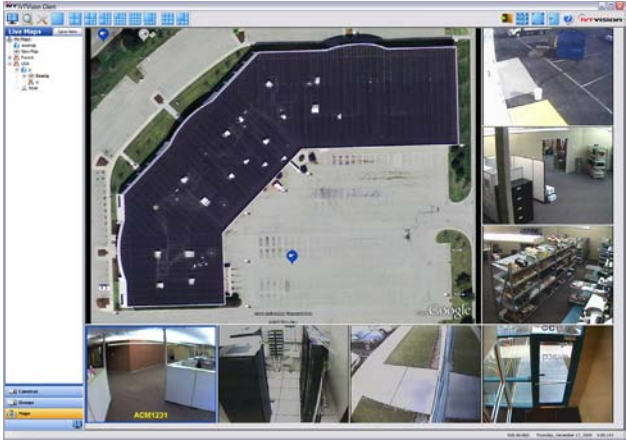


Video Management Software

Cross Platform IP Video Surveillance Up to 64 IP Cameras per Server



The iVTVision® VMS (Video Management System) software installs on commercial off-the-shelf (COTS) servers running Windows or Linux operating systems to create an advanced security solution, providing recording of the latest, state-of-the-art IP video surveillance cameras. The powerful, yet easy-to-operate client user interface installs on any standard computer running Windows, Linux or Mac OS X and easily connects to multiple iVTVision servers including Hybrid servers (analog and IP cameras) and IP Camera servers from Inaxsys. Video from all iVTVision systems can be accessed using web browsers and mobile devices with access to the internet. iVTVision VMS is available in Prime (entry-level), Professional, and Enterprise versions to suit the number of cameras and feature requirements.



Mapping feature on iVTVision client

Features iVTVision VMS Software

- Easy to Install and Operate
- Fully Functional Windows, Linux & Mac Clients
- Server Software Runs on Windows and Linux
- Enhanced Web Server (Live and Recorded Video)
- Digital PTZ (Live & Recorded Video)
- Optical PTZ Camera Control (Analog and IP)
- Graphic Search Display
- Simple and Flexible IP Camera Licensing
- POS/ATM Text Insertion Search
- Event Search & Event Monitoring
- Pre/Post-alarm Recording
- Smart Search
- Virtual Matrix
- Multi-Monitor (video wall)
- Multi-Camera Playback & Export
- iVTRcall Single Button Export
- iVT Replay Quick Convenient Playback
- Analog & IP Cameras on One Interface
- Supports Megapixel and H.264 Cameras
- Megapixel Camera Cropping
- Covert Cameras
- Sensitivity Settings
- Selectable Frame Rate
- Privacy Block
- Simple Mapping
- Enterprise Multi-Level Mapping
- LDAP / Active Directory
- Enterprise User Setup





IP Camera Integration





Access Control Integration



SOFTWARE FEATURES	Prime Server Software	Professional Server Software	Enterprise Server Software
Max. Cameras per Server (hardware dependent)	16 Analog 16 IP	64 Analog 96 IP	64 Analog 96 IP
Server OS Compatibility	Windows/Linux	Windows/Linux	Windows/Linux
Free Client Software	Windows/Linux/Mac	Windows/Linux/Mac	Windows/Linux/Mac
Web Server (Live & Playback)	✓	✓	✓
Browser Compatibility	IE, Chrome, Safari, Firefox, Opera	IE, Chrome, Safari, Firefox, Opera	IE, Chrome, Safari, Firefox, Opera
Max. Server Connections per Client	1	512 (thick client) 16 (web client)	512 (thick client) 16 (web client)
Multi-camera Playback	✓	✓	✓
Analog PTZ Control & Presets	✓	✓	✓
Digital PTZ Control & Presets	✓	(Live and Recorded Video)	(Live and Recorded Video)
Event Notification		SMS (text messages & e-mail)	SMS (text messages & e-mail)
Video Export	✓	✓	✓
Simultaneous Video Export	1 Channel	16 Channel	16 Channel
Video Loss Notification		✓	✓
Event Linking	Discrete Inputs Only	✓	✓
Graphic Search Display	✓	✓	✓
POS/ATM Text Insertion Search	✓	✓	✓
Event Searching	✓	✓	✓
Multi-Monitor & Video Wall	✓	✓	✓
IVT Recall One Button Export		✓	✓
IVT Instant Replay	✓	✓	✓
Mapping		✓	Multi-Level
LDAP / Active Directory			✓
Enterprise User Setup			✓

Server - Min. Requirements

Processor:	Intel® Dual Core® Pentium E2160, 1.8 GHz or greater
Graphics:	1280 x 1024 x 32 bits
RAM:	1 GB
NIC:	10/100/1000BASE-T Ethernet
Hard Disk:	Western Digital Enterprise Drives, WD RE2 SATA (or) Seagate Barracuda ES.2 SATA 30 GB reserved for OS and VMS server software
Operating System:	Microsoft® Windows 2003 Server (or) Microsoft® Windows XP (all versions) (or) Microsoft® Windows Vista (all versions) (or) Linux Ubuntu 8.04 Debian Package

Web Browser Access

COMPATIBILITY:	Internet Explorer, Firefox, Apple Safari, Opera Google Chrome
----------------	--

Mobile Device Access

COMPATIBILITY:	iPhone and iPod Touch, Android, BlackBerry, Windows Mobile OS, Most internet ready devices
----------------	---

Client Workstation - Min. Requirements (WIN/LINUX)

Processor:	Intel® Celeron® Processor 420 at 1.6 GHz or greater
Graphics:	1280 x 1024 x 32 bits
RAM:	1GB
NIC:	10/100/1000BASE-T Ethernet
Hard Disk:	80 GB Serial ATA drive
Operating Systems:	Microsoft® Windows 2003 Server (or) Microsoft® Windows XP (all versions) (or) Microsoft® Windows Vista (all versions) (or) Linux Ubuntu 8.04 Debian Package

Client Workstation - Min. Requirements (MAC)

Processor:	Intel® 1.83 GHz Core Duo or greater
Graphics:	1024 x 768 x 32 bits
RAM:	1GB
NIC:	10/100/1000BASE-T Ethernet
Hard Disk:	80 GB Serial ATA drive
OS:	Mac OS X

Browser Compatibility



Mobile Compatibility (browser)



Client Compatibility

