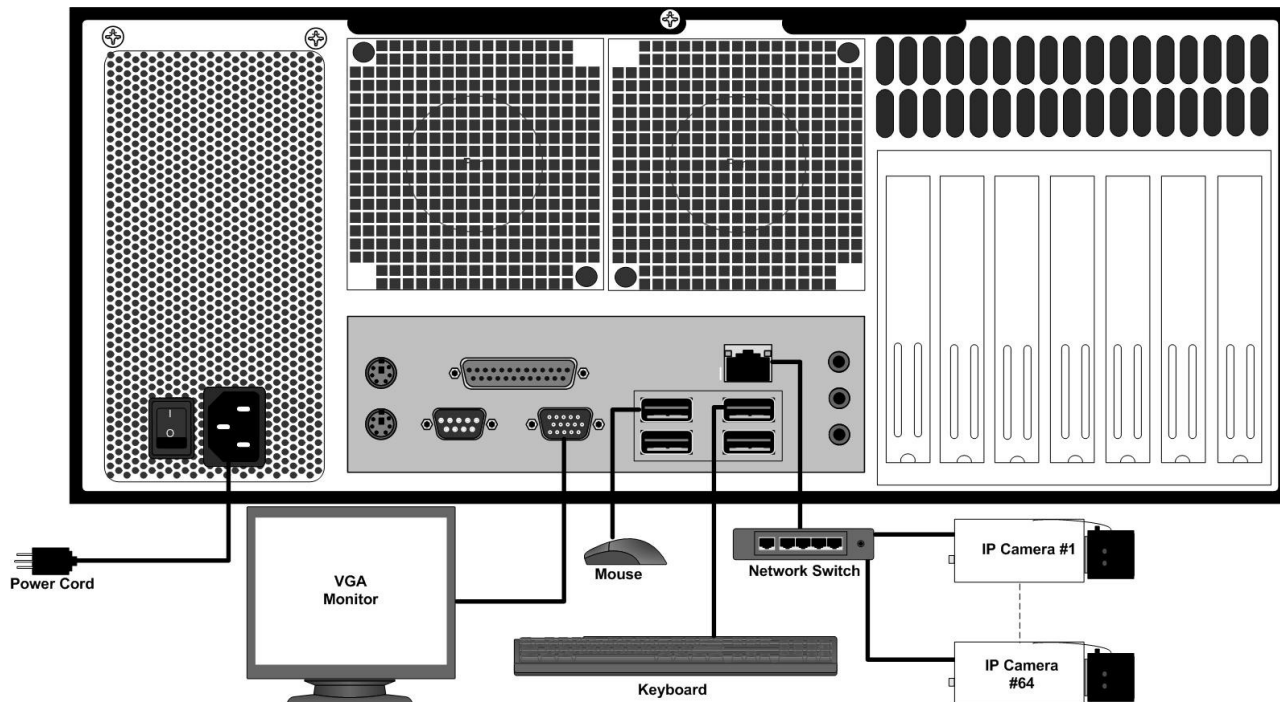




1 Connections

Connect the cables based on the diagram below.



When the IVTVision System boots, IVTVision Server automatically starts as a background service and begins recording. The operating system will then auto login to the **user** account. Both **user** and **admin** accounts are configured to start IVTVision Client immediately upon login.

The video recording factory defaults are:

- 1) All cameras enabled for motion based recording
- 2) All cameras will be recording at the frame rate and resolution that the camera has set in its webpage. This can be later changed through the Inaxsys Client software.
- 3) Audio recording is disabled

To change any of these defaults, see the Setup Mode section of the user manual.

2 Operating System Setup

Your IVTVision System has been configured to take advantage of operating system security features. The factory configuration includes two operating system accounts; **admin** and **user**.

NOTE: The default passwords should be changed by the operator and written and stored in a secure fashion to prevent unauthorized access or modifications to the system.

| For Windows | For Linux |
|--|--|
| <p>To change the passwords for your operating system accounts:</p> <ul style="list-style-type: none"> • Switch operating system user to the admin account via the start menu • Access the Start Menu ► Settings ► Control Panel ► User Accounts • Pick the account to be changed • Select Change Password | <p>To change the passwords for your operating system accounts:</p> <ul style="list-style-type: none"> • Log off the user account by pressing the red power button in the lower left corner. • Log in to the admin account. Default password is “admin256” • Access the Start Menu ► System Administration ► Users & Groups • Pick the account to be changed and select Properties • Under Set Password by hand, enter the new password twice. • Select OK, and OK again |

Once you successfully change the password for the **admin** and **user** accounts, write them in the space provided for future reference.

| Default Operating System Settings | New Operating System Settings |
|---|--|
| <p>Username: admin Password: admin256 Privileges: computer administrator</p> | <p>Username: admin Password: _____ Privileges: computer administrator</p> |
| <p>Username: user Password: user5710 Privileges: restricted user</p> | <p>Username: user Password: _____ Privileges: restricted user</p> |

To continue using the autologin feature of Windows, you need to update it with your new user password.

- Access the Start Menu ► Run
- Type CONTROL USERPASSWORDS2 ► OK
- Check AND Uncheck the “Users must enter a user name and password to use this computer” box
- Click Apply
- Type the new password and confirm it ► OK

Once the IVTVision Server begins recording video, it will continue even if no user is logged in or no IVTVision Client is running. It will stop recording only if:

- The IVTVision system is shut down
- The IVTVision Server service is stopped (Windows only)
- The IVTVision core.exe process is stopped

To prevent this from happening inadvertently or maliciously, the ability to shut down the computer or access the operating controls has been restricted from the **user** account. To shut down the system or perform maintenance, it will be necessary to switch to the **admin** account.

3 IVTVision User Setup




The IVTVision Server can be accessed from multiple IVTVision Clients, which may be running from the same computer as IVTVision Server or from remotely networked computers.

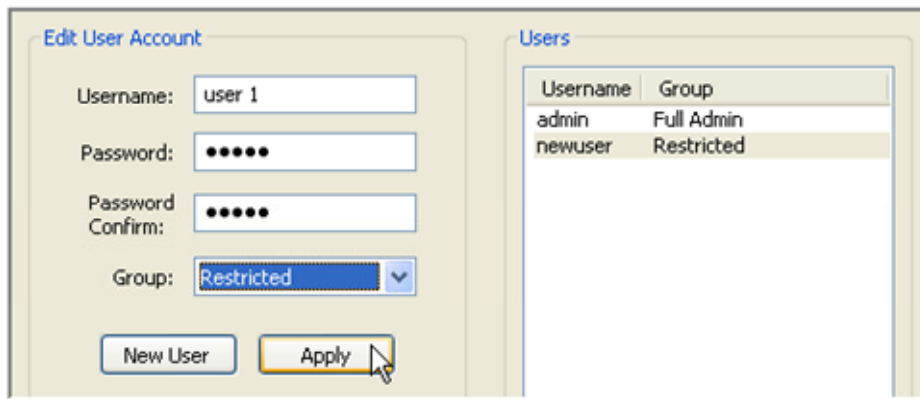
Your IVTVision Server has been preconfigured with both an admin and user account:

To log in to the system, see Section 2 for the log in names and passwords.

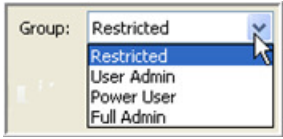
Each operating system account maintains separate settings for IVTVision Client. These settings include usernames, passwords, and network addresses required for the IVTVision Client to access IVTVision Servers. By default both the **user** and **admin** operating system accounts have settings which provide administrator access to the instance of IVTVision Server running on the local IVTVision system.

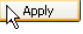
NOTE: To protect the IVTVision Server, Inaxsys recommends that as part of the initial IVTVision Server configuration, the operator configure a new user on the IVTVision Server with Restricted privileges

To add new users, press the Setup  toolbar button. Expand the server's setup menu by clicking the "+" next to the IVTVision Server  in the tree, then select Users . Click the New User button. The Username field is automatically populated with "New User" and highlighted in blue to begin adding the new user. Type in the name of the new user you are adding then tab to the Password field and enter a new password. Select the Password Confirm field and retype the password. Select the Password Confirm field and retype the password.




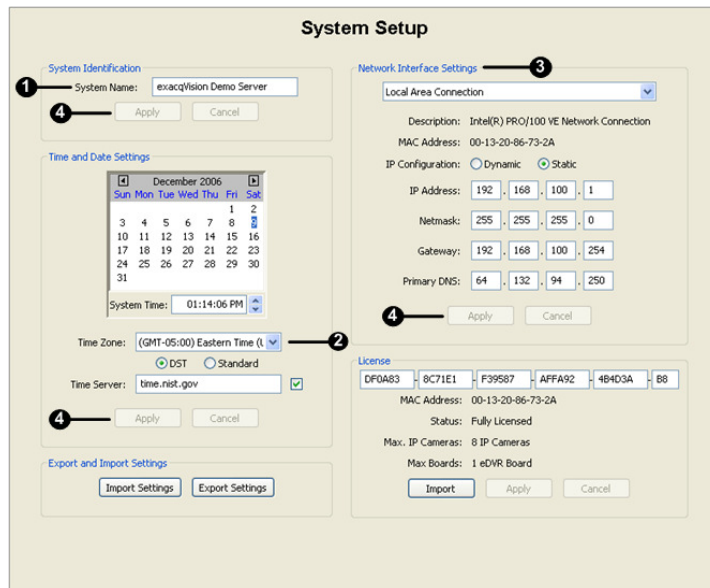
Click the Group drop down box to select the type of access level that will be assigned to this user.

| | |
|---|---|
|  | Restricted: Access to viewing live video and searching recorded video. |
| | User Admin: Access to viewing live video, searching recorded video, and adding and deleting users. |
| | Power User: Access to all features except adding or deleting users. |
| | Administrator: Access to all features of the system. |

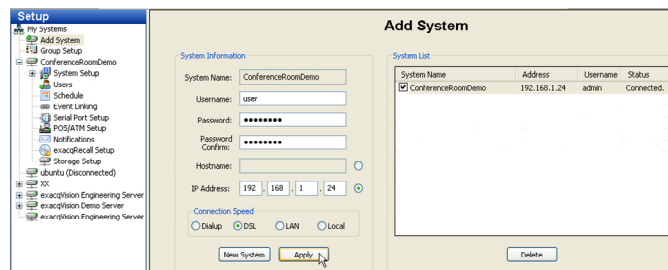
Designate which cameras the user will be able to access for viewing live and recorded video in the Authorized Sources tree, and click the Apply button  to add the new user to the IVTVision Server. For more detailed instructions, see the User Setup section of the IVTVision User Manual or the context sensitive online help file.

4 System Setup

Once the new users have been created, you'll need to customize the IVTVision System for your installation. The System Setup  screen is where you set basic system parameters for the server application, including the System Name, Time Zone, and IP Address Settings.



- 1) The System Name field will default to the serial number on the sticker on the side of the chassis of the system you purchased. You can keep this name or change it by typing a new name over the serial number, but your system name must be unique.
- 2) The Time Zone will be set as Eastern (US) time. You can change the time zone by using the dropdown menu. Use the radio buttons to indicate Daylight Savings or Standard time.
- 3) Your IVTVision System is configured to receive an IP address dynamically via a DHCP server. To set your IVTVision System to use a static IP address, start the IVTVision Client on the IVTVision System. Go to the System Setup page and change it to static and enter the desired IP Address. Do not change the 127.0.0.1 IP address from the Add System page. The 127.0.0.1 address will always connect to the local computer, regardless of the IP address assigned by the router or user.
- 4) Click the Apply buttons to apply these settings to your Client application.



Now, log off the operating system and log in as **user**. The IVTVision Client will start automatically. Go to the Add Systems menu, select the System Name from the System List, type user in the User Name field, type and confirm the password, and click Apply. You are now logged in as the user you have created. When the **User** account logs in, it will now use this account by default.

5 Network Configuration

If you plan to have clients from outside your local area network access your IVTVision Server, you will need to change your router settings to forward port 22609 to the IVTVision Server's IP address. See your router user manual or go to www.portforward.com/routers.htm for instructions.